

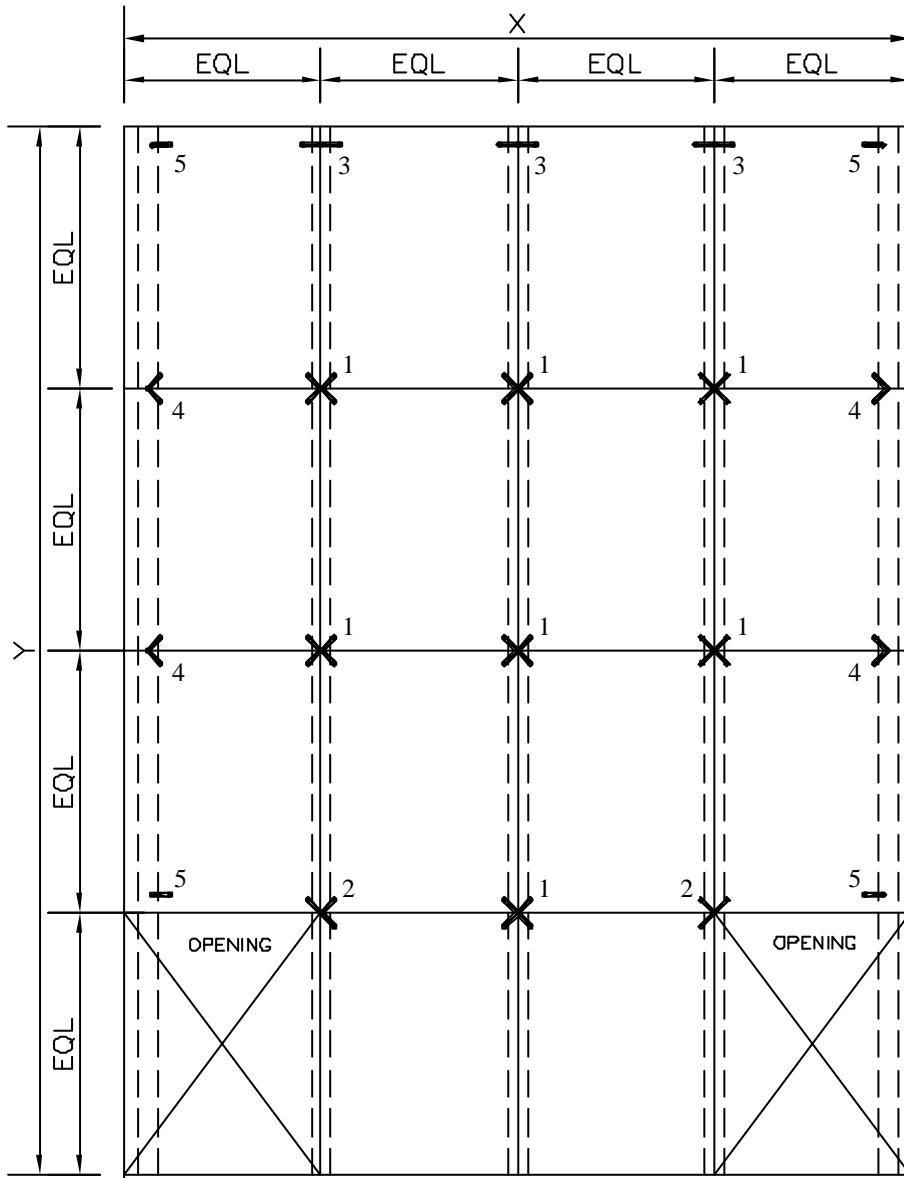


V - SERIES

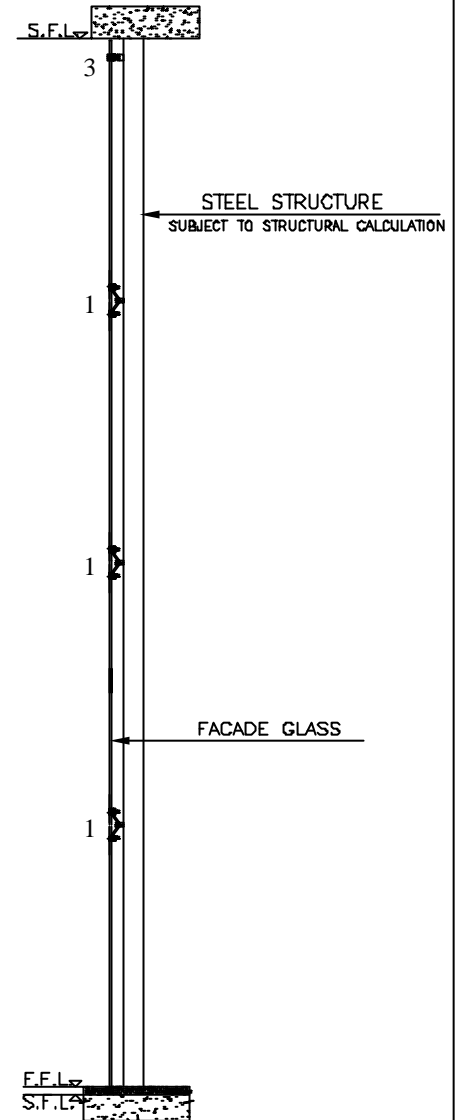
# DORMA ENTRY

- V1 - 1 ARM SPIDER
- V2 180 - 2 ARM SPIDER
- V2 90 - 2 ARM SPIDER
- V3 - 3 ARM SPIDER
- V4 - 4 ARM SPIDER

## MOCK UP ELEVATION



ELEVATION



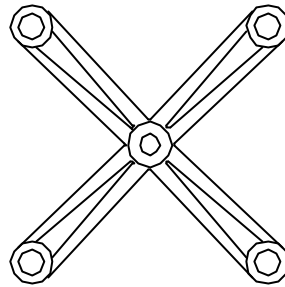
SECTION

NO	FITTINGS DESCRIPTION	PAGE NO:
1	V4 - 4 ARM SPIDER	1
2	V3 - 3 ARM SPIDER	2
3	V2 180° - 2 ARM SPIDER FACADE	3
4	V2 90° - 2 ARM SPIDER FACADE	4
5	V1 - 1 ARM SPIDER FACADE	5
6	GLASS PREPARATION FOR BOLTS	6

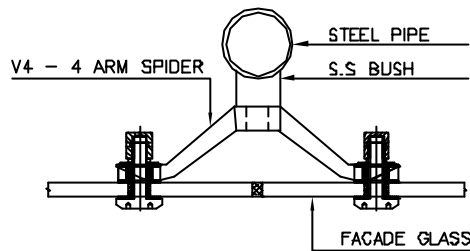
**V4 - 4 ARM SPIDER**



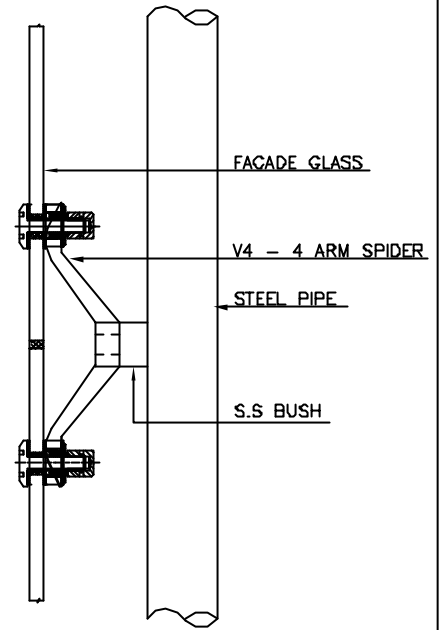
ARTICLE NO :0010702040101



ELEVATION

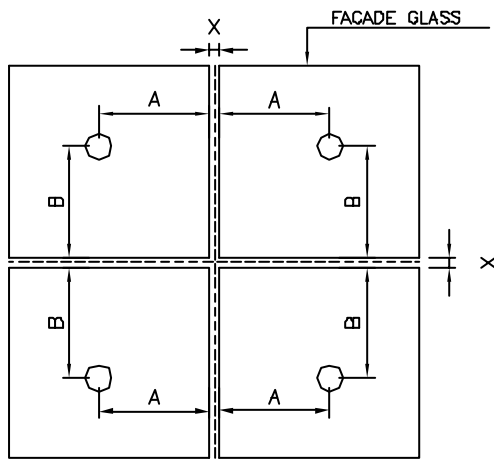


PLAN



SECTION

GLASS PREPARATION FOR FACADE GLASS



$$A = (200 - X) / 2$$

$$B = (200 - X) / 2$$

GLASS HOLE:

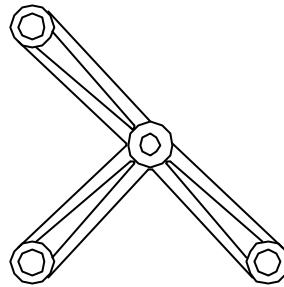
S.NO	BOLTS DESCRIPTION	HOLE Ø
1	FLAT HEAD FIXED BOLT (FHB M12)	22mm
2	FLAT HEAD ARTICULATED BOLT (FHAB M12)	32mm
3	COUNTER SUNK FIXED BOLT (CSB M12)	30mm OUTSIDE & 20mm INSIDE (COUNTER SUNK HOLE)
4	COUNTER SUNK ARTICULATED BOLT (CSAB M12)	42mm OUTSIDE & 32mm INSIDE (COUNTER SUNK HOLE)

\* FOR MORE DETAILS REFER GLASS PREPARATION FOR BOLTS

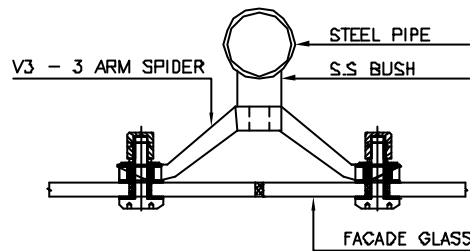
**V3 - 3 ARM SPIDER**



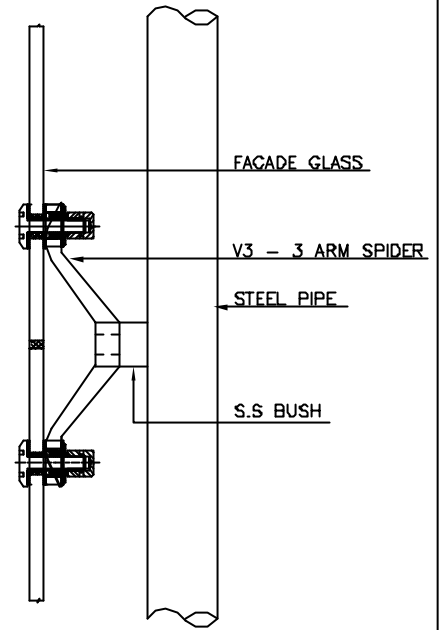
ARTICLE NO :0010702030101



ELEVATION

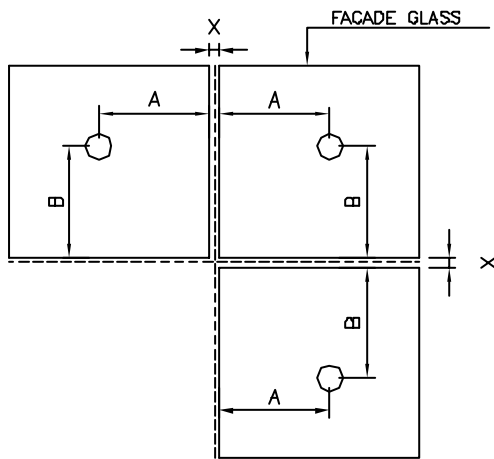


PLAN



SECTION

GLASS PREPARATION FOR FACADE GLASS



$$A = (200 - X) / 2$$

$$B = (200 - X) / 2$$

GLASS HOLE:

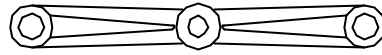
S.NO	BOLTS DESCRIPTION	HOLE Ø
1	FLAT HEAD FIXED BOLT (FHB M12)	22mm
2	FLAT HEAD ARTICULATED BOLT (FHAB M12)	32mm
3	COUNTER SUNK FIXED BOLT (CSB M12 )	30mm OUTSIDE & 20mm INSIDE (COUNTER SUNK HOLE )
4	COUNTER SUNK ARTICULATED BOLT (CSAB M12 )	42mm OUTSIDE & 32mm INSIDE (COUNTER SUNK HOLE )

\* FOR MORE DETAILS REFER GLASS PREPARATION FOR BOLTS

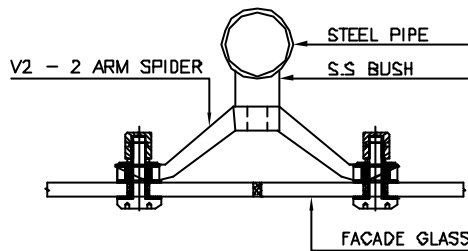
**V2 180° - 2 ARM SPIDER**



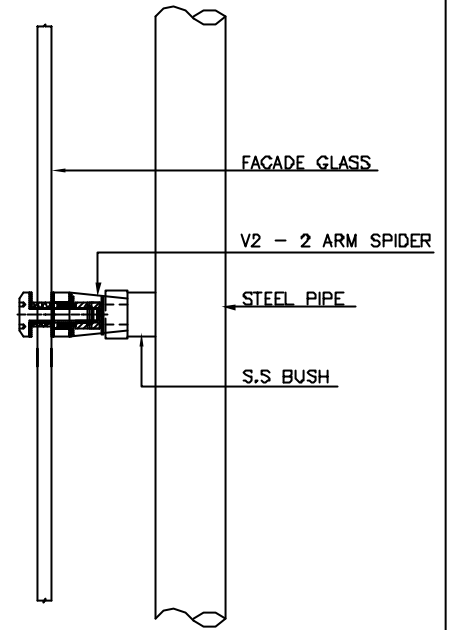
ARTICLE NO :0010702021101



ELEVATION

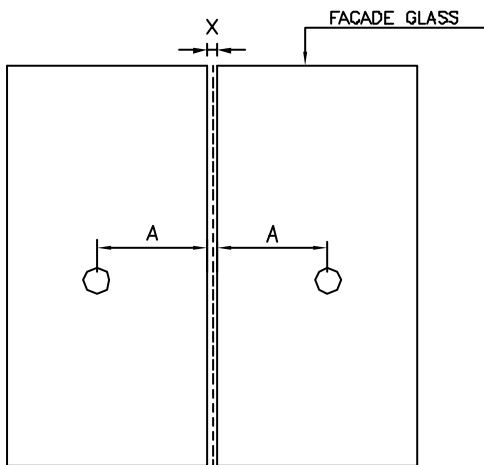


PLAN



SECTION

GLASS PREPARATION FOR FACADE GLASS



$$A = (200 - X) / 2$$

GLASS HOLE:

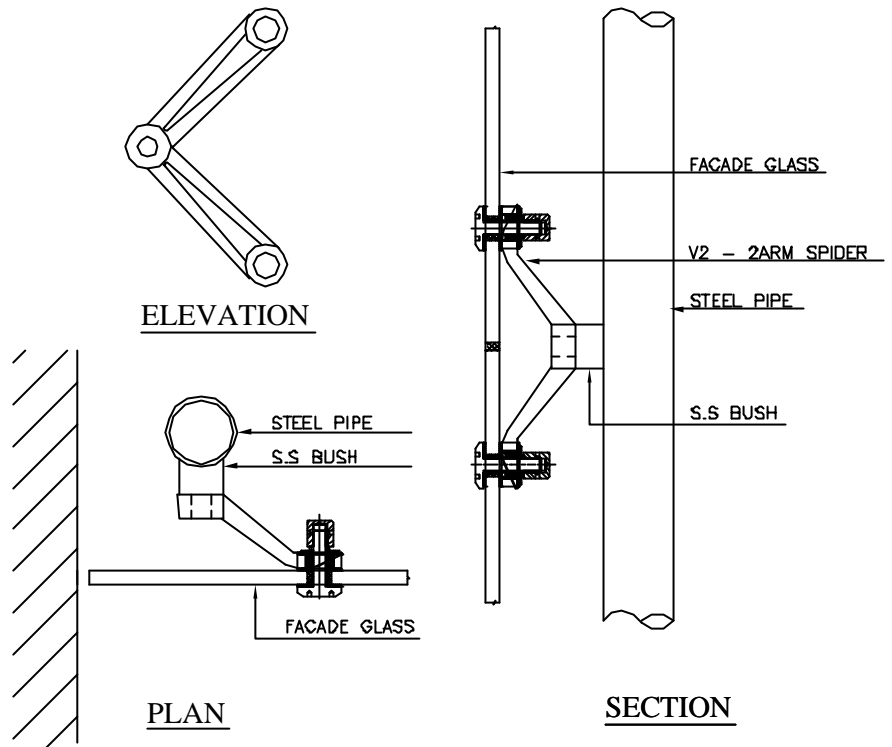
S.NO	BOLTS DESCRIPTION	HOLE Ø
1	FLAT HEAD FIXED BOLT (FHB M12)	22mm
2	FLAT HEAD ARTICULATED BOLT (FHAB M12)	32mm
3	COUNTER SUNK FIXED BOLT (CSB M12 )	30mm OUTSIDE & 20mm INSIDE ( COUNTER SUNK HOLE )
4	COUNTER SUNK ARTICULATED BOLT (CSAB M12 )	42mm OUTSIDE & 32mm INSIDE ( COUNTER SUNK HOLE )

\* FOR MORE DETAILS REFER GLASS PREPARATION FOR BOLTS

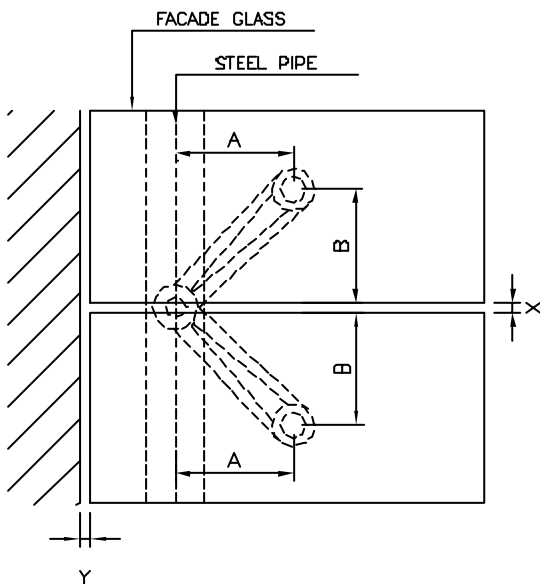
**V2 90° - 2 ARM SPIDER**



ARTICLE NO :0010702020101



**GLASS PREPARATION FOR FACADE GLASS**



$A = 100$   
 $B = (200 - X) / 2$

**GLASS HOLE:**

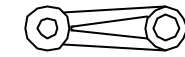
S.NO	BOLTS DESCRIPTION	HOLE Ø
1	FLAT HEAD FIXED BOLT (FHB M12)	22mm
2	FLAT HEAD ARTICULATED BOLT (FHAB M12)	32mm
3	COUNTER SUNK FIXED BOLT (CSB M12)	30mm OUTSIDE & 20mm INSIDE (COUNTER SUNK HOLE)
4	COUNTER SUNK ARTICULATED BOLT (CSAB M12)	42mm OUTSIDE & 32mm INSIDE (COUNTER SUNK HOLE)

\* FOR MORE DETAILS REFER GLASS PREPARATION FOR BOLTS

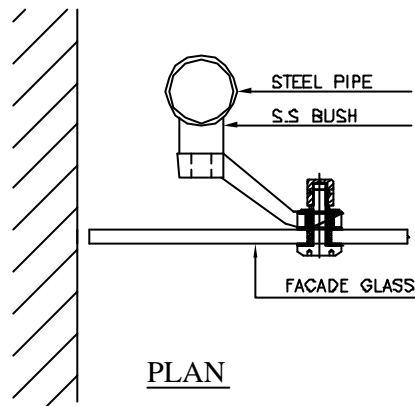
**V1 - 1 ARM SPIDER**



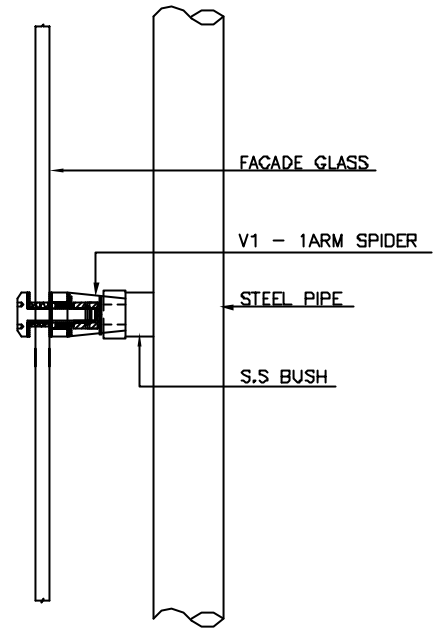
ARTICLE NO :0010702010101



ELEVATION

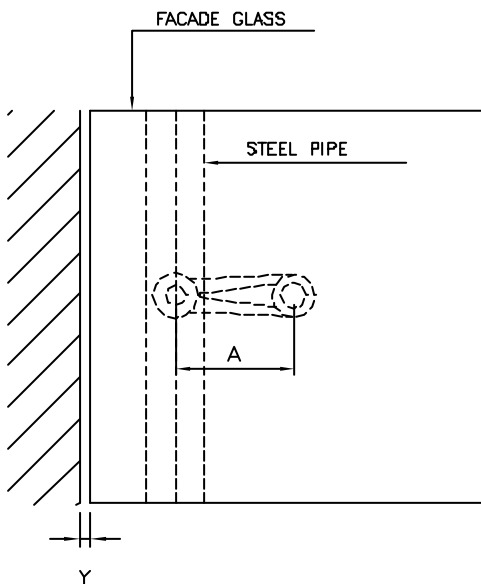


PLAN



SECTION

GLASS PREPARATION FOR FACADE GLASS



$A = 100$

GLASS HOLE:

S.NO	BOLTS DESCRIPTION	HOLE Ø
1	FLAT HEAD FIXED BOLT (FHB M12)	22mm
2	FLAT HEAD ARTICULATED BOLT (FHAB M12)	32mm
3	COUNTER SUNK FIXED BOLT (CSB M12 )	30mm OUTSIDE & 20mm INSIDE ( COUNTER SUNK HOLE )
4	COUNTER SUNK ARTICULATED BOLT (CSAB M12 )	42mm OUTSIDE & 32mm INSIDE ( COUNTER SUNK HOLE )

\* FOR MORE DETAILS REFER GLASS PREPARATION FOR BOLTS

## GLASS PREPARATION FOR BOLTS

BOLTS	SECTION	TEMPERED GLASS	LAMINATED GLASS						
<p>FLAT HEAD FIXED BOLT - FHB M12 GLASS THICKNESS - 12mm - 15mm</p>	<table border="1"> <tr> <td>FHB M12 - FINISH</td> <td>ARTICLE NO:</td> </tr> <tr> <td>POLISHED FINISH</td> <td>0010707010101</td> </tr> <tr> <td>SATIN FINISH</td> <td>0010707010102</td> </tr> </table>	FHB M12 - FINISH	ARTICLE NO:	POLISHED FINISH	0010707010101	SATIN FINISH	0010707010102		
FHB M12 - FINISH	ARTICLE NO:								
POLISHED FINISH	0010707010101								
SATIN FINISH	0010707010102								
<p>FLAT HEAD ARTICULATED BOLT - FHAB M12 GLASS THICKNESS - 12mm - 15mm</p>	<table border="1"> <tr> <td>FHAB M12 - FINISH</td> <td>ARTICLE NO:</td> </tr> <tr> <td>POLISHED FINISH</td> <td>0010707020101</td> </tr> <tr> <td>SATIN FINISH</td> <td>0010707020102</td> </tr> </table>	FHAB M12 - FINISH	ARTICLE NO:	POLISHED FINISH	0010707020101	SATIN FINISH	0010707020102		
FHAB M12 - FINISH	ARTICLE NO:								
POLISHED FINISH	0010707020101								
SATIN FINISH	0010707020102								
<p>COUNTERSUNK FIXED BOLT - CSB M12 GLASS THICKNESS - 12mm - 15mm</p>	<table border="1"> <tr> <td>CSB M12 - FINISH</td> <td>ARTICLE NO:</td> </tr> <tr> <td>POLISHED FINISH</td> <td>0010706010101</td> </tr> <tr> <td>SATIN FINISH</td> <td>0010706010102</td> </tr> </table>	CSB M12 - FINISH	ARTICLE NO:	POLISHED FINISH	0010706010101	SATIN FINISH	0010706010102		
CSB M12 - FINISH	ARTICLE NO:								
POLISHED FINISH	0010706010101								
SATIN FINISH	0010706010102								
<p>COUNTERSUNK ARTICULATED BOLT - CSAB M12 GLASS THICKNESS - 12mm - 15mm</p>	<table border="1"> <tr> <td>CSAB M12 - FINISH</td> <td>ARTICLE NO:</td> </tr> <tr> <td>POLISHED FINISH</td> <td>0010706020101</td> </tr> <tr> <td>SATIN FINISH</td> <td>0010706020102</td> </tr> </table>	CSAB M12 - FINISH	ARTICLE NO:	POLISHED FINISH	0010706020101	SATIN FINISH	0010706020102		
CSAB M12 - FINISH	ARTICLE NO:								
POLISHED FINISH	0010706020101								
SATIN FINISH	0010706020102								



DORMA India Private Limited - Chennai  
DES ORDER FORM

CBP Name:		CBP Order No:			
Location:		Date:			
Project Name :		DI Quotation No:			
Location:		Date:			
Façade Glass Thick Ness (mm):		Fin Glass Thick Ness (mm):			
Insert <input type="checkbox"/>		Anchor Bolts <input type="checkbox"/>			
		Normal Bolts <input type="checkbox"/>			
<b>Finish:</b>					
<b>Façade- Ceiling</b>					
Sl No	Description	Article Number	BOM	UOM	Order Qty
1.1.1	B1 Brackets - Mild Steel Ni Plated - Double Side	0010741100105	1	SET	
1.1.2	B1 Brackets - Mild Steel Ni Plated - Single Side	0010741200105	1	SET	
1.2.1	B1 Brackets - Satin Stainless steel - Double Side	0010741100102	1	SET	
1.2.2	B1 Brackets - Satin Stainless Steel - Single Side	0010741200102	1	SET	
1.3.1	B1 Brackets - Red oxide - Double Side	0010741100109	1	SET	
1.3.2	B1 Brackets - Red Oxide - Single Side	0010741200109	1	SET	
5.2.1	PFF GT Façade ceiling Connector - 12 mm - Left	0010712210101	1	SET	
5.2.2	PFF GT Façade ceiling Connector - 12 mm - Right	0010712310101	1	SET	
5.3.1	PFF GT Façade ceiling Connector - 15 mm - Left	0010712220101	1	SET	
5.3.2	PFF GT Façade ceiling Connector - 15 mm - Right	0010712320101	1	SET	
<b>Fin Ceiling</b>					
2.1.1	B2 Brackets - Mild Steel Ni Plated - Double Side	0010742100105	1	SET	
2.2.1	B2 Brackets - Satin Stainless steel - Double Side	0010742100102	1	SET	
2.3.1	B2 Brackets - Red oxide - Double Side	0010742100109	1	SET	
3.1.1	B3 Brackets - Mild Steel Ni Plated - Double Side	0010743100105	1	SET	
3.2.1	B3 Brackets - Satin Stainless steel - Double Side	0010743100102	1	SET	
3.3.1	B3 Brackets - Red oxide - Double Side	0010743100109	1	SET	
4.1.1	B4 Brackets - Mild Steel Ni Plated - Double Side	0010744100105	1	SET	
4.2.1	B4 Brackets - Satin Stainless steel - Double Side	0010744100102	1	SET	
4.3.1	B4 Brackets - Red oxide - Double Side	0010744100109	1	SET	
5.1.1	PFF GT Fin ceiling connector - 12 mm	0010712100101	1	SET	
5.1.2	PFF GT Fin ceiling connector - 15 mm	0010712110101	1	SET	
5.1.3	PFF GT Fin ceiling connector - 19 mm	0010712120101	1	SET	
5.1.4	PFF GT Fin ceiling connector - 21 mm	0010712130101	1	SET	
<b>Wall - Façade Connections</b>					
5.2.5	PFF G1 Wall to Glass Bracket	0010712600101	1	SET	
5.2.6	PFF G2 2 Point Wall to Glass	0010712700101	1	SET	
<b>Façade - Façade Connection</b>					
6.1	PFF G1 - 2 point	0010701020101	1	No	
	12MM 15MM 19MM 21MM	Mention fin glassthickness			
7.1	PFF G2 - 4 point	0010701040101	1	No	
	12MM 15MM 19MM 21MM	Mention fin glassthickness			
8.1	PFF 400 Splice plate	0010701050101	1	SET	
	12MM 15MM 19MM 21MM	Mention fin glassthickness			
8.2.1	PFF 400 G2 - 4 point	0010701060101	1	SET	
	12MM 15MM 19MM 21MM	Mention fin glassthickness			
9	V1 - Single Point	0010702010101	1	Nos	
10	V2 - 2 point 90 deg	0010702020101	1	Nos	
11	V2 - 2 point 180 deg	0010702021101	1	Nos	
12	V3 - 3 point	0010702030101	1	Nos	
13	V4 - 4 point	0010702040101	1	Nos	
13.1	Bush for V fittings	0010702910101	1	Nos	
<b>Bolts</b>					
14.1	CSB M12 - Polished finish	0010706010101	1	Nos	
14.2	CSB M12 - Satin Finish	0010706010102	1	Nos	
15.1	CSAB M12 - Polished	0010706020101	1	Nos	
	CSAB M12 - Satin Finish	0010706020102	1	Nos	
16.1	CSB2 M12 - Polished	0010706030101	1	Nos	
16.2	CSB2 M12 - Satin Finish	0010706030102	1	Nos	
17.1	FHB M12 - Polished	0010707010101	1	Nos	
17.2	FHB M12 - Satin Finish	0010707010102	1	Nos	
18.1	FHB2 M12 - Polished	0010707030101	1	Nos	
18.2	FHB2 M12 - Satin Finish	0010707030102	1	Nos	
19.1	FHAB M12 - Polished	0010707020101	1	Nos	
19.2	FHAB M12 - Satin Finish	0010707020102	1	Nos	



Postal address:  
DORMA-Glas GmbH  
Postfach 3268  
32076 Bad Salzufflen  
Germany

Location:  
Max-Planck-Straße 37 – 45  
32107 Bad Salzufflen  
Germany

Tel. ++49(0)5222/9 24-0  
Fax ++49(0)5222/9 24-146

[www.dorma-glas.com](http://www.dorma-glas.com)